



# **AEROPRAKT**

## **SERVICE BULLITEN**

### **No. SB A-32-10**

**Release date: 17.05.2021**

**Effective date: 17.05.2021**

**Completion date:**

**Superseded notice: none**

**Model: A-32**

**Serial number(s) affected:** A32 aircraft serial No. 58, 73, 84, 95, 98, 99, 100, 105, 108, 113, 121, 123, 124, 132, 133, 137, 138, 144, 138, 150, 154, 155, 162, 167, 170, and 173

**Repeating symbols:**

Please, pay attention to the following symbols throughout this document marking important information.

▲ **WARNING:** Identifies an instruction, which if not followed may cause serious injury or even death.

■ **CAUTION:** Denotes an instruction, which if not followed, may cause severe damage.

◆ **NOTE:** Information useful for better handling.

**1) Planning information****1.1) Aircraft affected**

A32 aircraft serial No. 58, 73, 84, 95, 98, 99, 100, 105, 108, 113, 121, 123, 124, 132, 133, 137, 138, 144, 138, 150, 154, 155, 162, 167, 170, and 173.

**1.2) Reason**

Limitations per A32L type certificate No. 956-17 2 issued 18.10.2018 and No. 971-20 1 issued 21.08.2020 (for MTOW of 472,5 kg per LTF-UL 2003) set temporarily for the German fleet of A32 aircraft reinforced to MTOM 600 kg, may be expanded to the limitations set per A32 type certificates No. 977-21 1, 977-21 2, 978-21 1, 978-21 2.

**1.3) Subject**

Bringing the A32 aircraft to compliance with the type design per type certificates No. 977-21 1, 977-21 2, 978-21 1, 978-21 2.

**1.4) Compliance**

Compliance with this Service Bulletin is recommended for the affected aircraft to allow their operation under the new regulations for ultralight aeroplanes (LTF-UL 2019).

**1.5) Approval**

The technical content of this Service Bulletin has been approved by Aeroprakt.

**1.6) Manpower**

Estimated work: modification according to the paragraph 3 can be done within 1 hour.

**1.7) Mass data**

Mass change – insignificant.

**1.8) Revision of other documents**

Pilot Operating Handbook has to be replaced for new version (supplied by the local dealer).

**1.9) Spare parts**

A set of new parts is supplied by local dealer.

**2. Spare parts information****2.1) Spare parts price**

Spare parts kit is supplied to the local dealer free of charge.

**2.2) Fees**

- Changing of the registration certificate: 50 € + 7 % or 19 % VAT (member of DULV/ no member)
- Changing of the noise certificate: 35 € + 7 % or 19 % VAT (member of DULV/ no member)
- Issue of the conformity certificate (Stückprüfschein): 60 € (+ tax if applicable)
- Handling fee 75 € (+ VAT, if applicable)

**2.3) Special tools / primer**

None.

### 3. Accomplishment / Instructions

#### 3.1) Install of temporary flap deflection limiter

3.1.1 Using a cross-end screwdriver undo 5 screws and remove the side pockets (photo 1, left and right).

3.1.2 Remove the left upper side panels by undoing 8 screws (photo 2).



Photo 1



Photo 2

3.1.3 Remove the right upper side panel together with the central panel by undoing 6 screws.

3.1.4 Remove the lower AN4-6A bolt attaching the flap lever fixator (Photo 4)



Photo 3



Photo 4

3.1.5 Install the limiter with AN4-17A bolt in place of the removed bolt (Photo 5).

3.1.6 Install back the upper panels in the order reversed to that described in steps 1-3. Attach the sticker with flap position markings to the central panel (Photo 6).

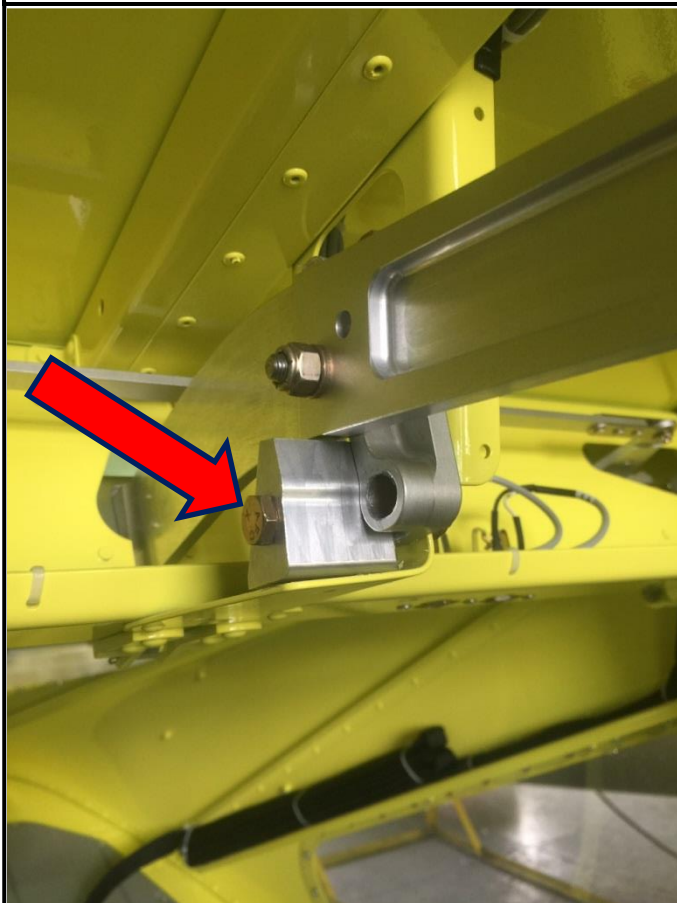


Photo 5

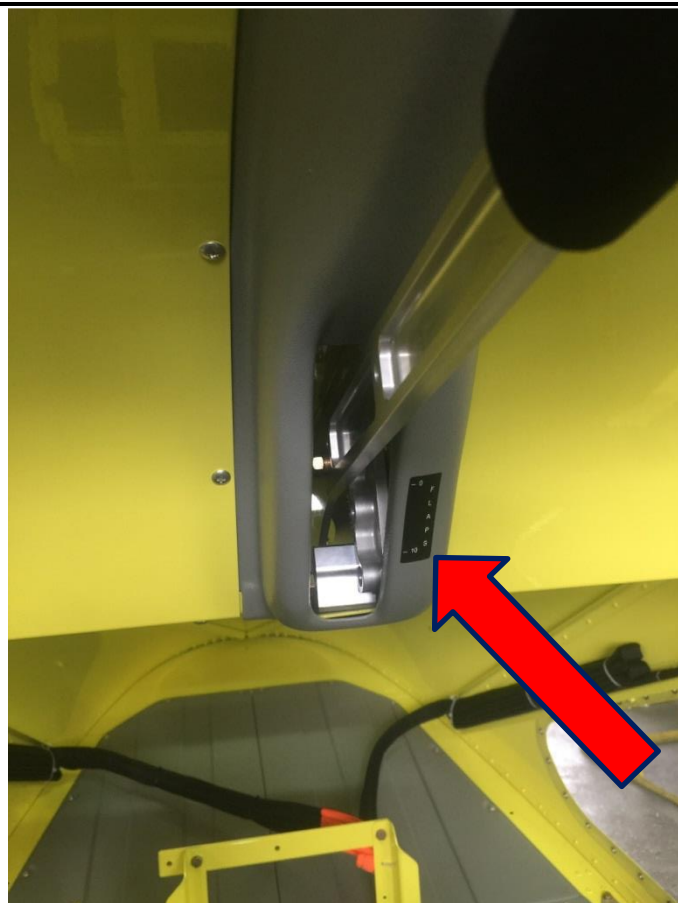


Photo 6

### 3.2) Attach a placard with temporary limitation of the maximum luggage weight to 15 kg

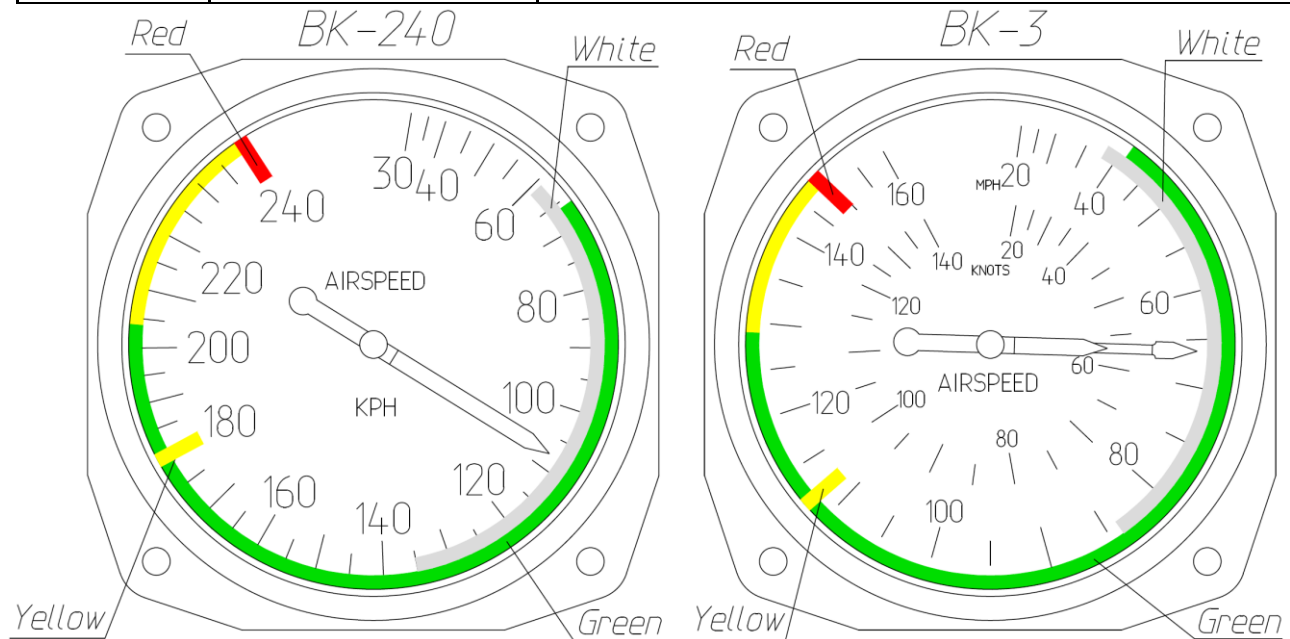
Replace the old placard with luggage weight limit of 30 kg to the new one with the temporary luggage weight limit of 15 kg.

### 3.3) Change the airspeed indicator marking

Change the airspeed indicator colour marking as specified in the table and on the picture below.

Marking	IAS range or value	Significance
White arc	61 – 135 km/h 38 – 84 mph 33 – 73 kts	Positive flap operating range
Green arc	66 – 208 km/h 41 – 129 mph 36 – 112 kts	Normal operating range
Yellow arc	208 – 240 km/h 129 – 149 mph 112 – 130 kts	Manoeuvres must be conducted with caution and only in smooth air
Yellow line	180 km/h 112 mph 97 kts	Design manoeuvring airspeed. Above this speed manoeuvres may only be carried out with caution (V <sub>A</sub> )
Red line	240 km/h	Maximum speed for all operations, may not be exceeded

	149 mph 130 kts	
--	--------------------	--



### 3.4) Replace the weight limitation placard on the instrument panel

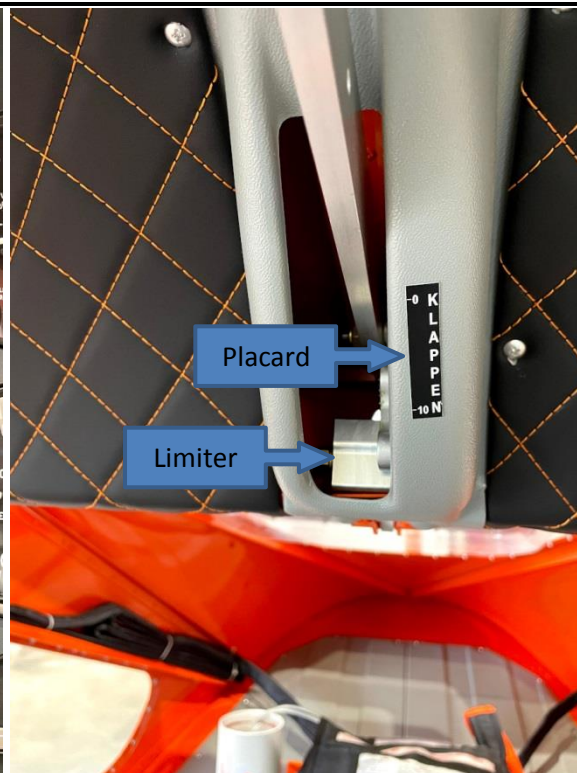
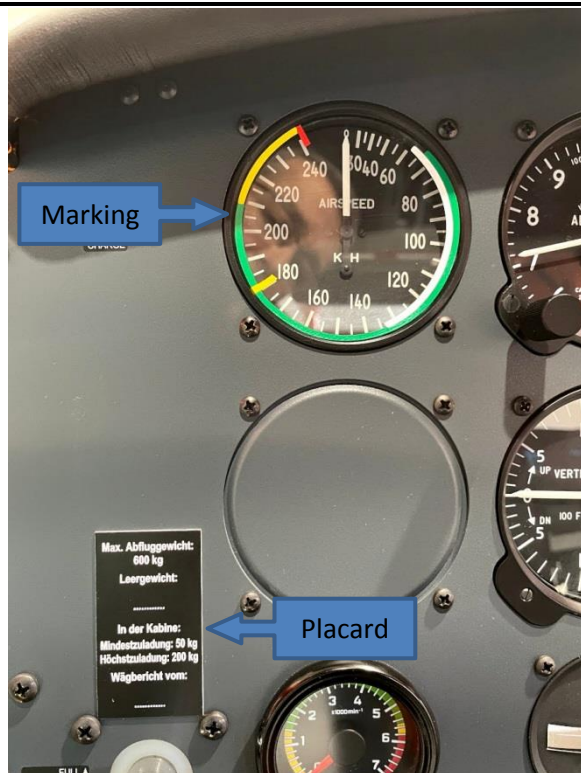
Replace the old weight limitation placard on the instrument panel with the new one (supplied by local dealer).

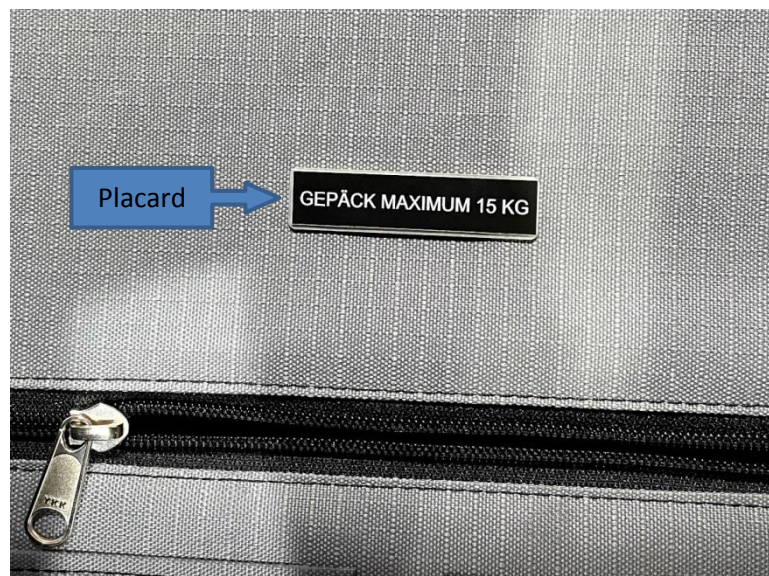
### 3.5) Send the photo documentation to the local dealer

Each owner must submit photo documentation to prove that the work to upgrade the aircraft has been carried out in accordance with the Service Bulletin. Please send this documentation to the address [info@aeroprakt.pl](mailto:info@aeroprakt.pl). They will be forwarded to DULV, together with the Declaration of Conformity.

The photos should include the items marked with arrows below.







- ◆ **NOTE:** Contact the local dealer for all materials and additional information:  
Aleksander Opoczynski at Zator airfield (EPZT)

AEROPRAKT Polska Sp. z o.o.  
Aeroprakt str. 2  
34-122 Gieraltowiczki, Poland;  
Mobile: +48602215854;  
info@aeroprakt.pl;  
www.aeroprakt.de