



# **AEROPRAKT**

## **SAFETY ALERT**

**No. SA A-32-03**

**Release date: 16.03.2018**

**Effective date: 16.03.2018**

**Completion date:**

**Superseded notice: none**

**Model: A-32**

**Serial number(s) affected: A32: from 001 to and including 028**

**Repeating symbols:**

Please, pay attention to the following symbols throughout this document marking important information.

- ▲ **WARNING:** Identifies an instruction, which if not followed may cause serious injury or even death.
- **CAUTION:** Denotes an instruction, which if not followed, may cause severe damage.
- ◆ **NOTE:** Information useful for better handling.

**1) Planning information****1.1) Aircraft affected**

Aeroprakt-32 airplanes, S/N from 001 to and including 028.

**1.2) Reason**

It was discovered that the doors may open in flight.

**1.3) Subject**

Door latch levers and stops.

**1.4) Compliance**

Compliance with this Safety Alert must be ensured after its publication prior to flying!

**1.5) Approval**

The technical content of this Safety Alert has been approved by Aeroprakt.

**1.6) Manpower**

Estimated man-hours: replacement of old parts for new ones can be carried out within 4 hours.

**1.7) Mass data**

Mass change – insignificant +70 grams.

**1.8) Revision of other documents**

None.

**1.9) Spare parts**

Modification parts kits are supplied by local dealers.

**2) Spare parts information****2.1) Spare parts cost**

Cost of the replacement parts kit – door latch lever assemblies (left and right), stops (left and right), doublers (2 pcs.) and fasteners – is supplied free of charge to the local dealer office.

**2.2) Spare tools / consumables**

For replacement: Ø3.1 mm drill bits, hand drill, Clico fasteners, pop-riveter, Allen key.

### 3) Accomplishment / Instructions

▲ **WARNING:** Failure to comply with this SA may cause door opening in flight.

#### 3.1) Removal of old latch lever and handle (fig. 1, 2)

◆ **NOTE:** Replacement must be done for both left and right doors.

3.1.1 Undo the screw (1) using Allen key.

3.1.2 Remove the handle (2).

3.1.3 Remove the latch lever (3).

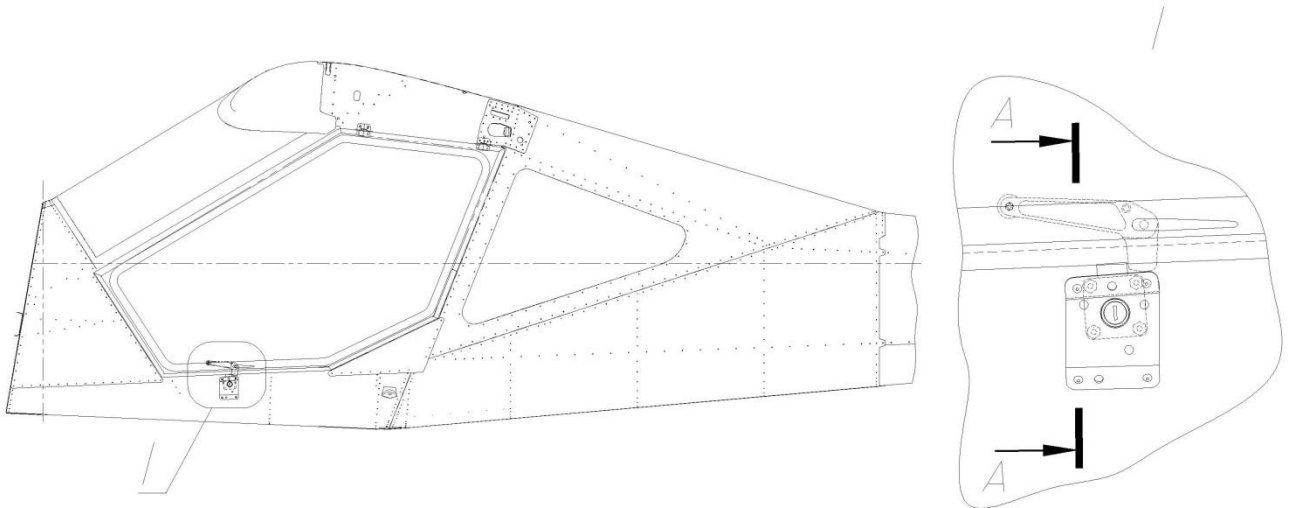


Fig. 1

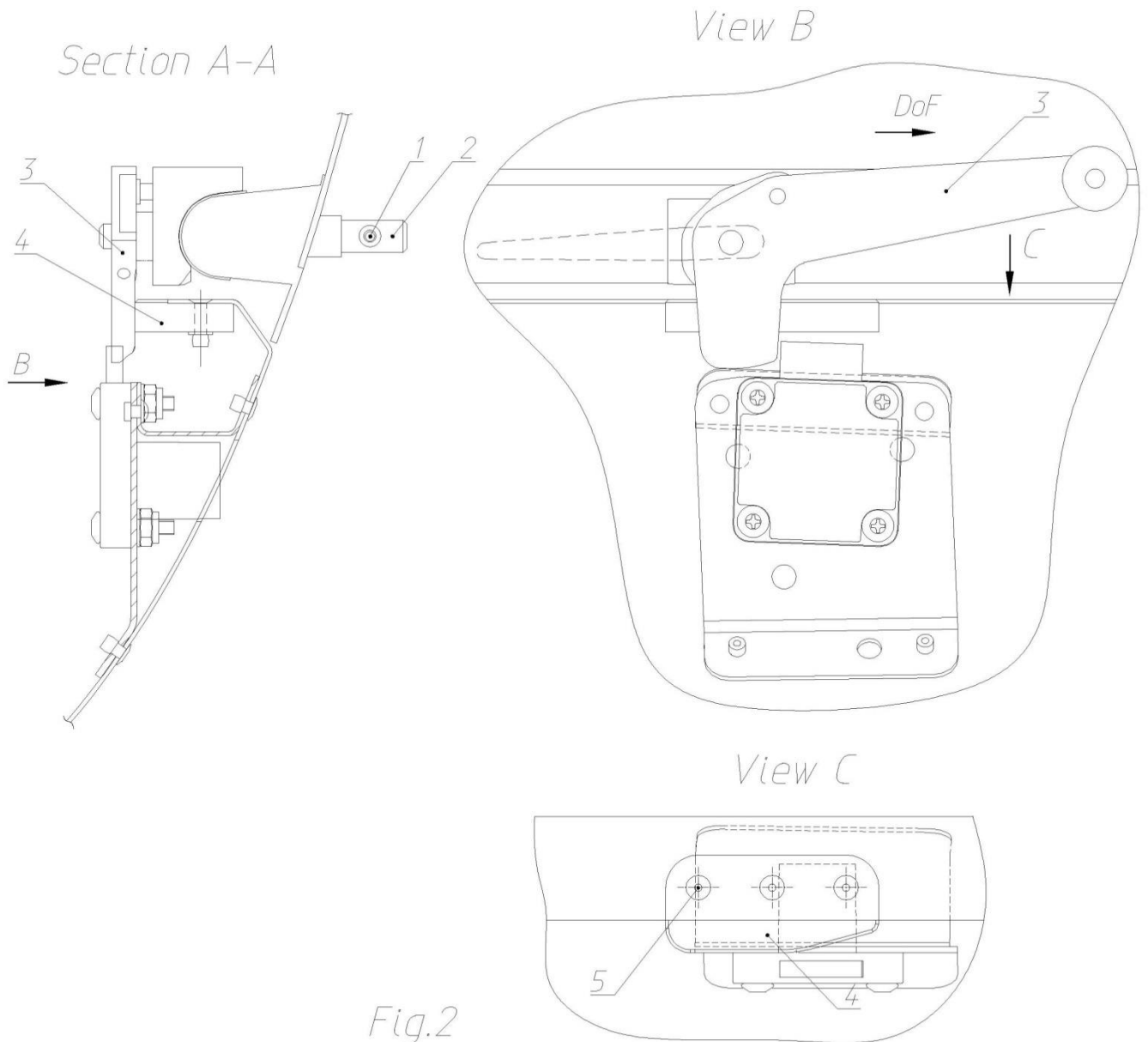


Fig.2

### 3.2) Removal of the old latch stop (see fig. 2 above)

- 3.2.1 Drill out with  $\varnothing 3.1$  mm bit the rivets (5) attaching the stop (4).
- 3.2.2 Remove the old stop (4).

### 3.3) Installation of the new latch stop (see fig. 3)

- 3.3.1 Install in place the new stop (7) aligning it with latch lever axle. Check dimension  $18^{+1}$  mm.
- 3.3.2 Mark holes for the rivets No. 9 and 10 on the new stop (7), using the holes in the beam and drill them with  $\varnothing 3.1$  mm drill bit.
- 3.3.3 Install in place the doubler (8) aligning it with the new stop (7). Check dimension 2 mm.
- 3.3.4 Mark holes for the rivets No. 9 and 10 on the doubler (8), drill them with  $\varnothing 3.1$  mm drill bit.
- 3.3.5 Countersink the holes in the doubler for flush rivets.
- 3.3.6 Drill  $\varnothing 3.1$  mm holes for the rivet No. 11 and 12 (on Section D-D and E-E respectively) in fuselage and new stop using the pilot holes in the doubler.
- 3.3.7 Mark and drill the  $\varnothing 3.1$  mm hole for the rivet No. 11 shown on View K.
- 3.3.8 Attach the new stop and doubler with rivets No. 9, 10, 11, 12 and washers No. 13.

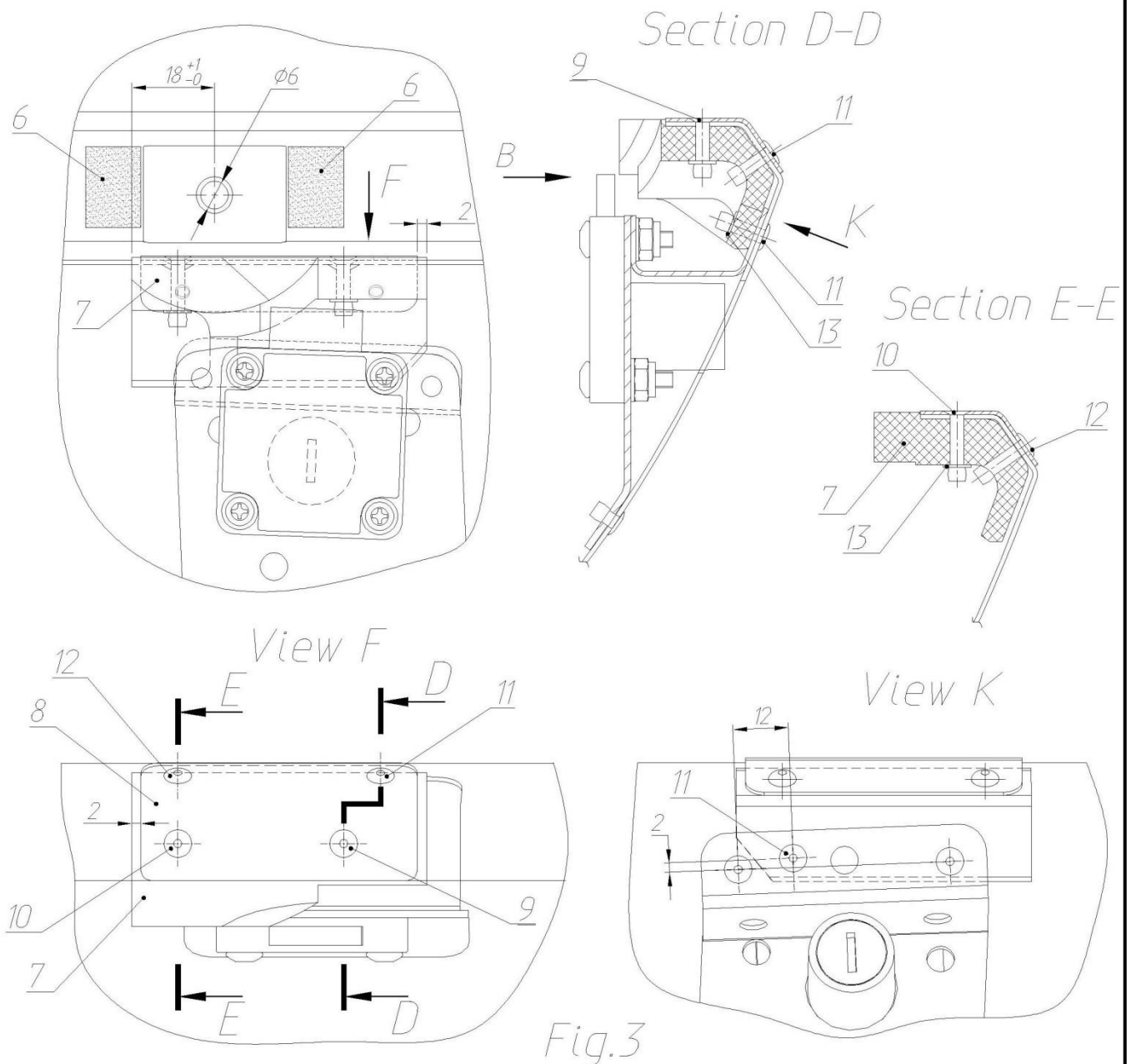


Fig.3

### 3.4) Installation of protective film on the door under the new latch stop (see fig. 3)

3.4.1 Remove the film covering the sticking layer of the protective film (6) and install it on the door on the left and right of the steel doubler.

### 3.5) Installation of the new latch lever with hook (see fig. 4)

3.5.1 Install the new latch lever with hook (14) Установить новый рычаг с кулачком поз.14.

3.5.2 Install back the latch handle (2).

3.5.3 Install back and tighten with Allen key the screw (1).

3.5.4 Check dimension 2 mm as shown on View H.

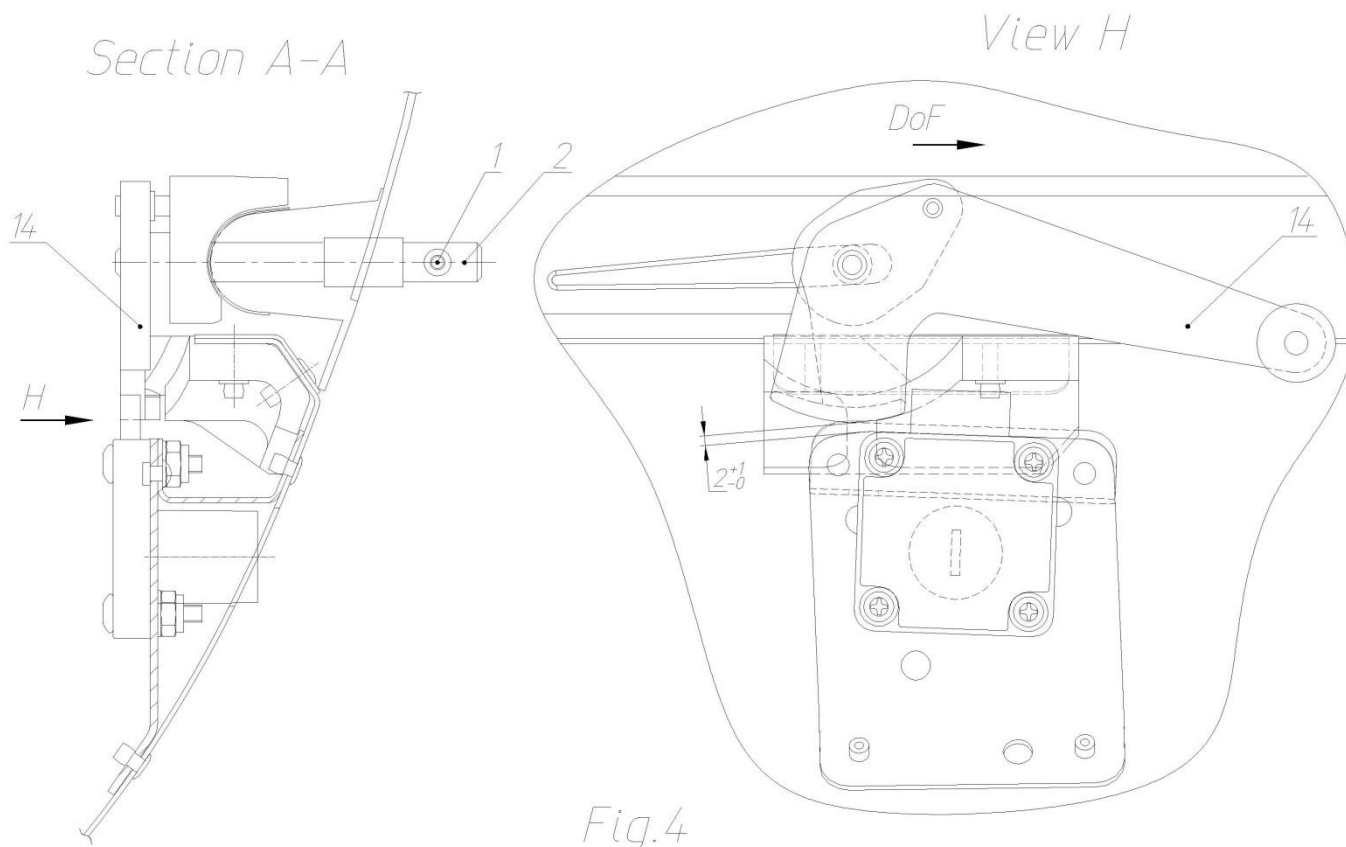


Fig.4

Fig. 4

◆ **NOTE:** All drawings above show the left latch. Right latch – mirrored view.